



PALMKI Combination Module 2 Factor Authentication

Datasheet



2-factor Authentication

- High level security
- Palmki + Badge

Benefits

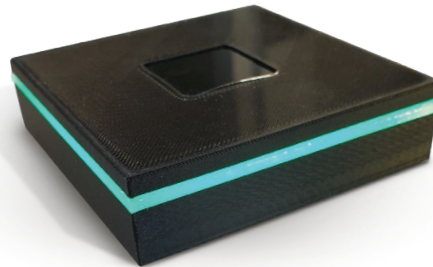
- No possibility of mistaken identity
- Fast and convenient
- Easy to use

Applications

- Verification
- Time registration
- Attendance registration
- Location registration
- Access control

GDPR

- Biometric data remains with the person
- Only local storage on the badge
- No need for a database or cloud storage



- PalmSecure Sensor with LED light signal in logo shape or robust U Guide
- 7" Touch color screen (optional) Possibility for custom input
- Builtin badge reader or external addon from third party
- Internal components
 - PCB board
 - Power converter 5V / 220V
 - Controller (optional)
- Standard software
 - Enrollment pack
 - Conversion pack
 - Verify pack
- Custom software
 - Time registration
 - Reporting
 - Tailor-made messages

This highly robust, yet stylish module provides unprecedented security through the use of 2-factor authentication. The combination of the biometric hand palm scan (no photo) with a personalized badge provides the highest degree of security. The person can be asked to identify themselves with the badge at any time by the security agent, but can only register or gain access in combination with the hand palm. This PALMKI solution is recommended in an environment where the highest degree of security is desired.

Custom messages can be displayed on the touch screen. This way, the user is guided through the process in a personalized way. This increases the comfort of use and minimizes training or incorrect registrations. This combination can be linked to optional software as desired.



www.palmki.eu

