

Laptop & Tablet Charging Station



Laptop & Tablet Charging Station

Lande Laptop & Tablet Charging Station is a secure storage for charging IT devices such as laptops, tablets and kindle books.

Charging station is a useful IT device management solution for institutions like universities and schools. Product gives adequate storage space and cable management possibilities for chargers. More over, intelligent charging system provides overload, overvoltage, over current and short circuit protection.

Features:

- Based on 420x800 mm, IP20 free standing cabinet reinforced with impact resistant rugged frame.
- 3 point locking round handle secure locking system
- Double opening 110 degree solid metal with perforated slots for ventilation purpose.
- Each 16 slots two shelves total 32 slots of tablet or laptop
- Slots for storage of tablets with secure 8 mm diameter special wire separator
- 2 pcs shelves assembled- (sliding)
- Available outer dimensions: 800x420x800 mm
- DIN 49440 Schuko power inlet 1 pcs IEC 320 C14 male socket 1 pcs on the right side panel of the body
- Maximum loading capacity: 200 kgs.

Standards and Compliance:

- ISO 9001
- Climatic and Environment: EN 61587-1/4.2, IEC 60068-2-1, IEC 60068-2-2, IEC 60068-2-30,
- Static Mechanical Load Lifting: EN 61587-1/5.2.1
- Static Mechanical Load Stiffness: EN 61587-1/5.2.2
- Dynamic Mechanical Load Vibration and Shock, Impact: EN 61587-1/5.3.1, EN 61587-1/5.3.3, IEC 60068-2-6, IEC 60068-2-27
- Earth Bond: EN 61587-1/6.2
- Flammability: EN 61587-1/6.3
- Degrees of Protection Provided By Enclosures (Ip Code): IP20, EN 61587-1/6.4



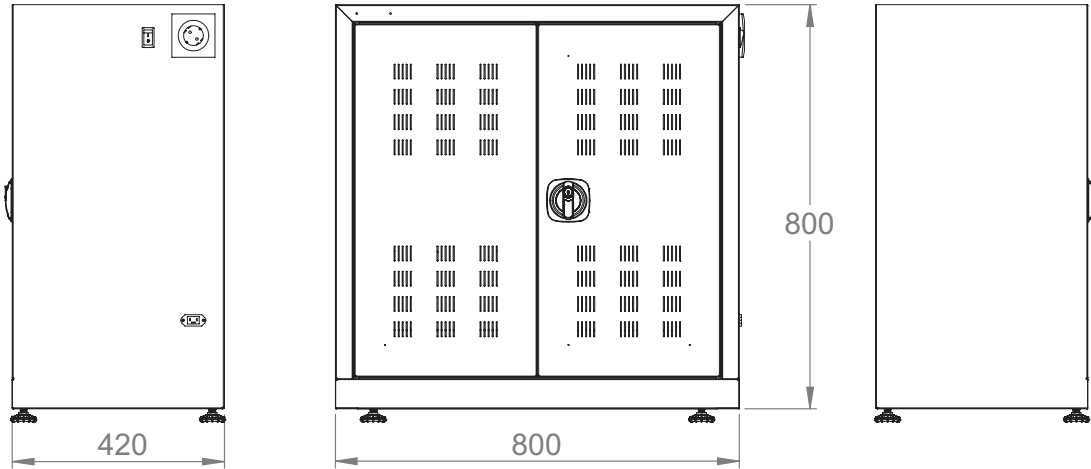
RAL 7035 Light Grey



RAL 9005 Black

Laptop & Tablet Charging Station

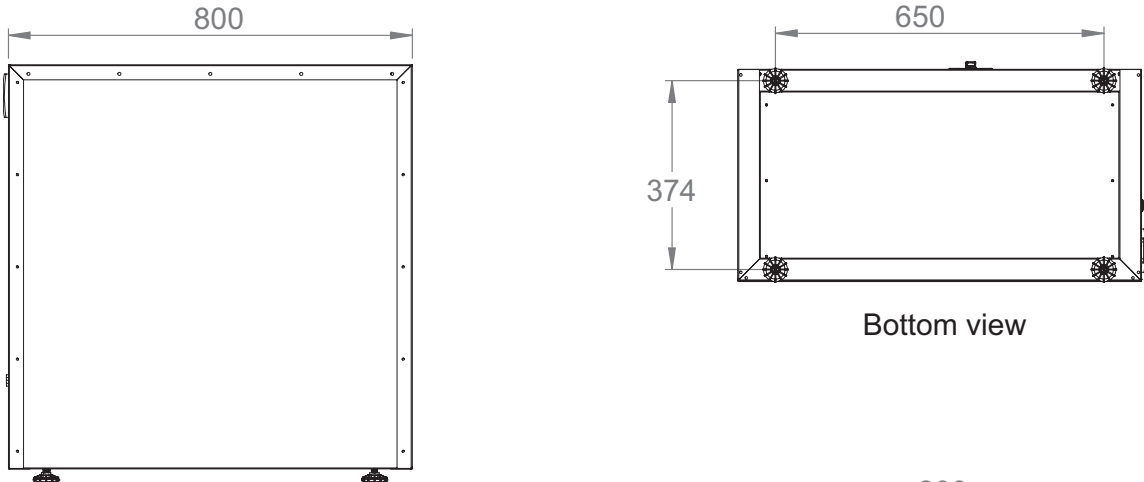
Construction Drawings



Left side view

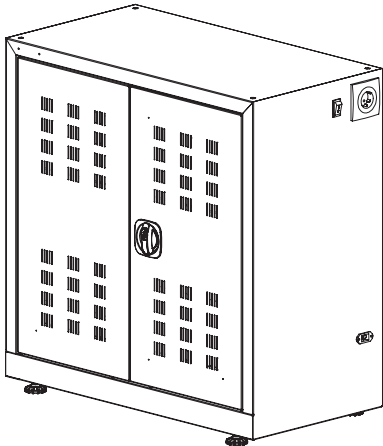
Front view

Right side view

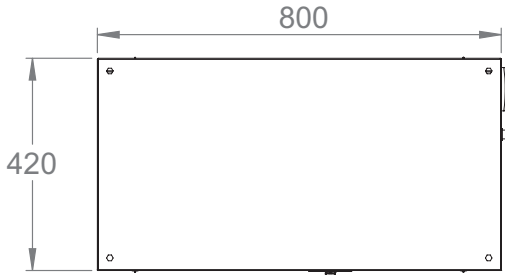


Rear view

Bottom view



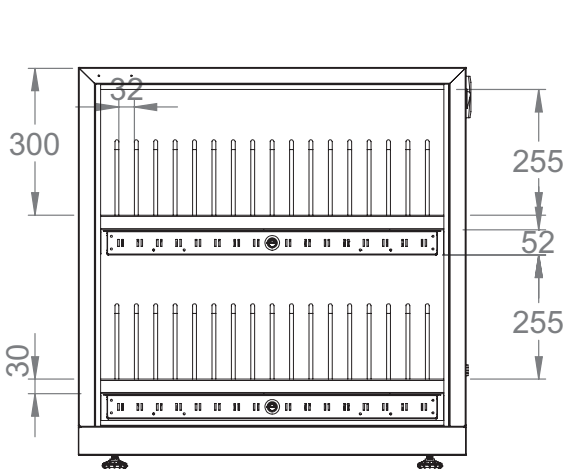
Isometric view



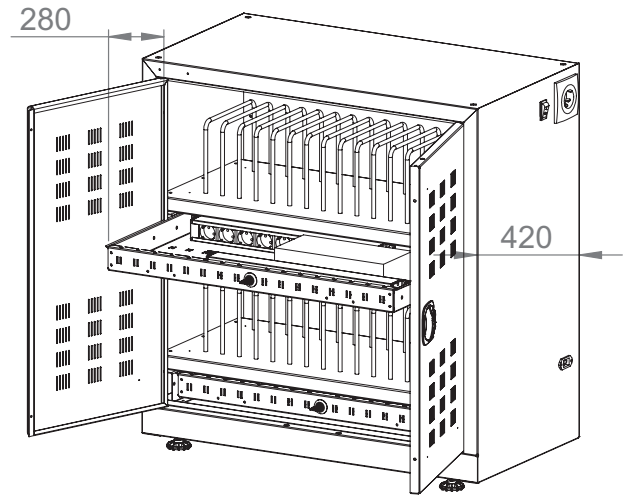
Top view

Laptop & Tablet Charging Station

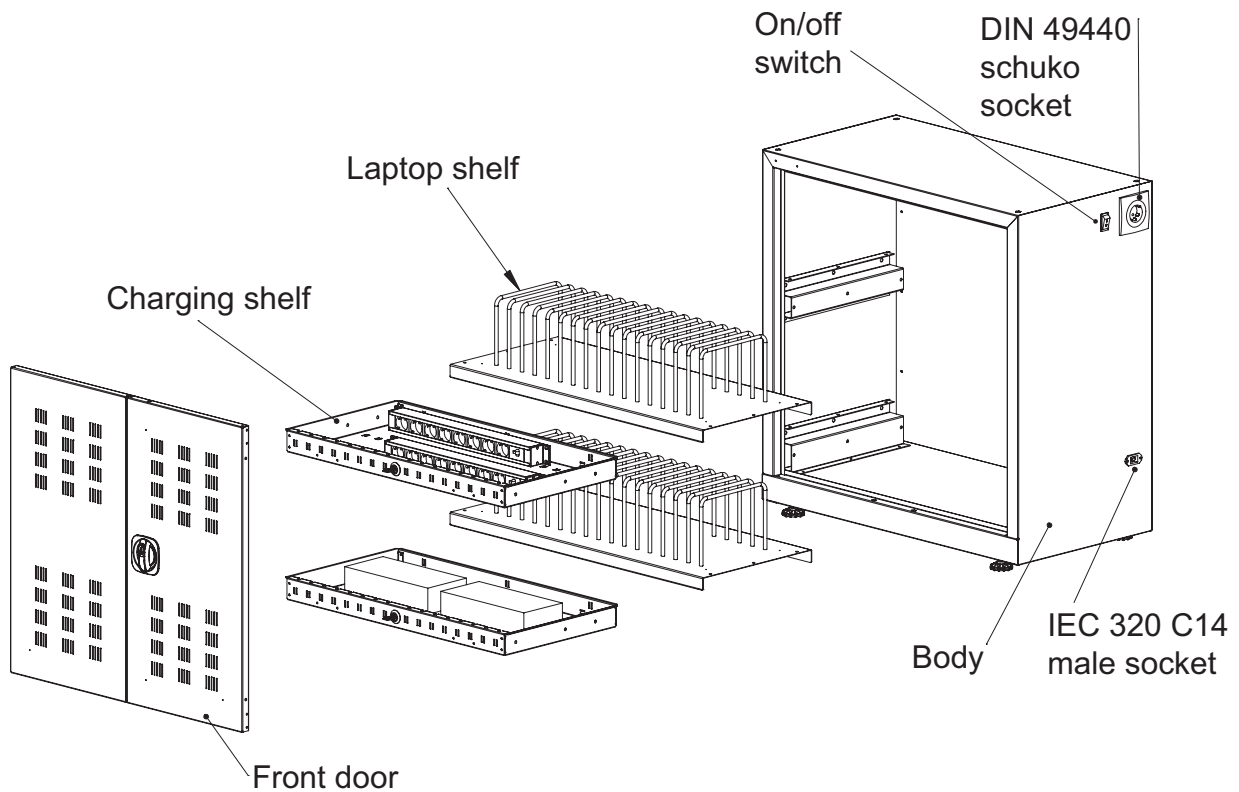
Construction Drawings



Front inside view



Front isometric view



Exploded view

Laptop & Tablet Charging Station							
Catalog Code	Series	Product Description	Width (mm)	Depth (mm)	Height (mm)	Power Entry (pcs)	Lock (pcs)
LN-LC-804280-LG	Laptop Tablet Cart Trolley	Laptop & Tablet Charging Station Free Standing RAL 7035 Light Grey	800	420	800	2	1
LN-LC-804280-BL	Laptop Tablet Cart Trolley	Laptop & Tablet Charging Station Free Standing RAL 9005 Black	800	420	800	2	1

Laptop & Tablet Charging Station

Accessories



Laptop & Tablet USB Charger

Catalog Code	Series	Product Description	Width (mm)	Depth (mm)	Height (mm)	Power Entry (pcs)
LN-USB-CHR-15P	Accessory	USB Charger Unit 15 port	-	-	-	16



Basic PDU

Catalog Code	Series	Product Description
LN-PRZ-ONF-1U8P-SC	Accessory	8xDIN49440 socket schuko power strip, 19" 1U, aluminium housing, 16A illuminated on/off switched, 4000 Watt, 250V AC, 3x1.5mm ² , 2,5m cable, DIN 49441 plug, CE approval



CONTACT DETAILS

Headquarters

Address:

Merve Mah. Gazi Cad. No: 17 **Phone:** +90 216 312 26 53
Sancaktepe - İstanbul / TURKEY **Fax** : +90 216 312 09 09

Factory

Address:

20. Cadde No: 14 Eskişehir **Phone:** +90 222 236 24 66 pbx
Organize San. Bölğ. 26110 **Fax** : +90 222 236 13 53
Eskişehir / TURKEY

www.lande.com.tr | sales@lande.com.tr

