

Desktop as a Service:

*RDS*

# ХТО ВИКОРИСТОВУЄ ОСТАННІ ТЕХНОЛОГІЇ?

Нові сценарії в "Mobile First, Cloud First" IT світі

## Працюй будь-де

Доступ із будь-якого  
девайсу

## Бізнес неперервність

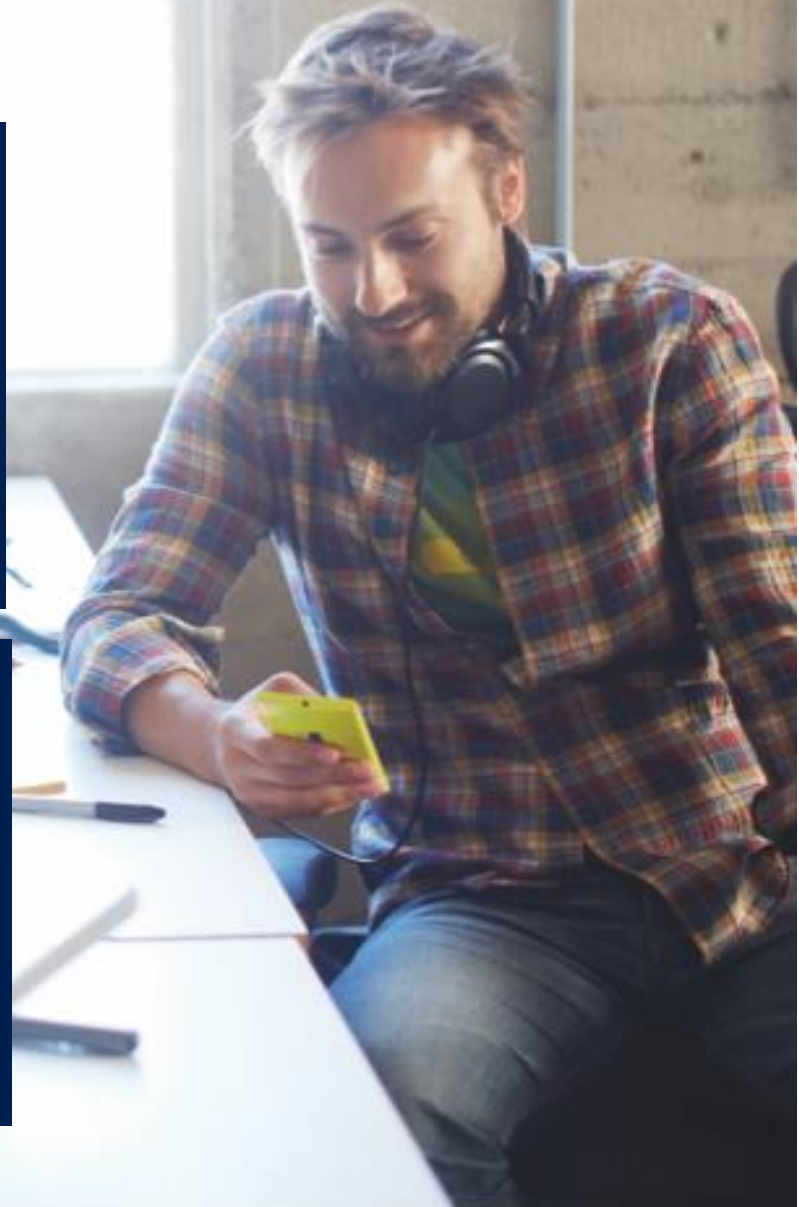
Збереження інформації  
та робочих додатків

## Bring Your Own Device

Користувацькі пристрої,  
корпоративний доступ

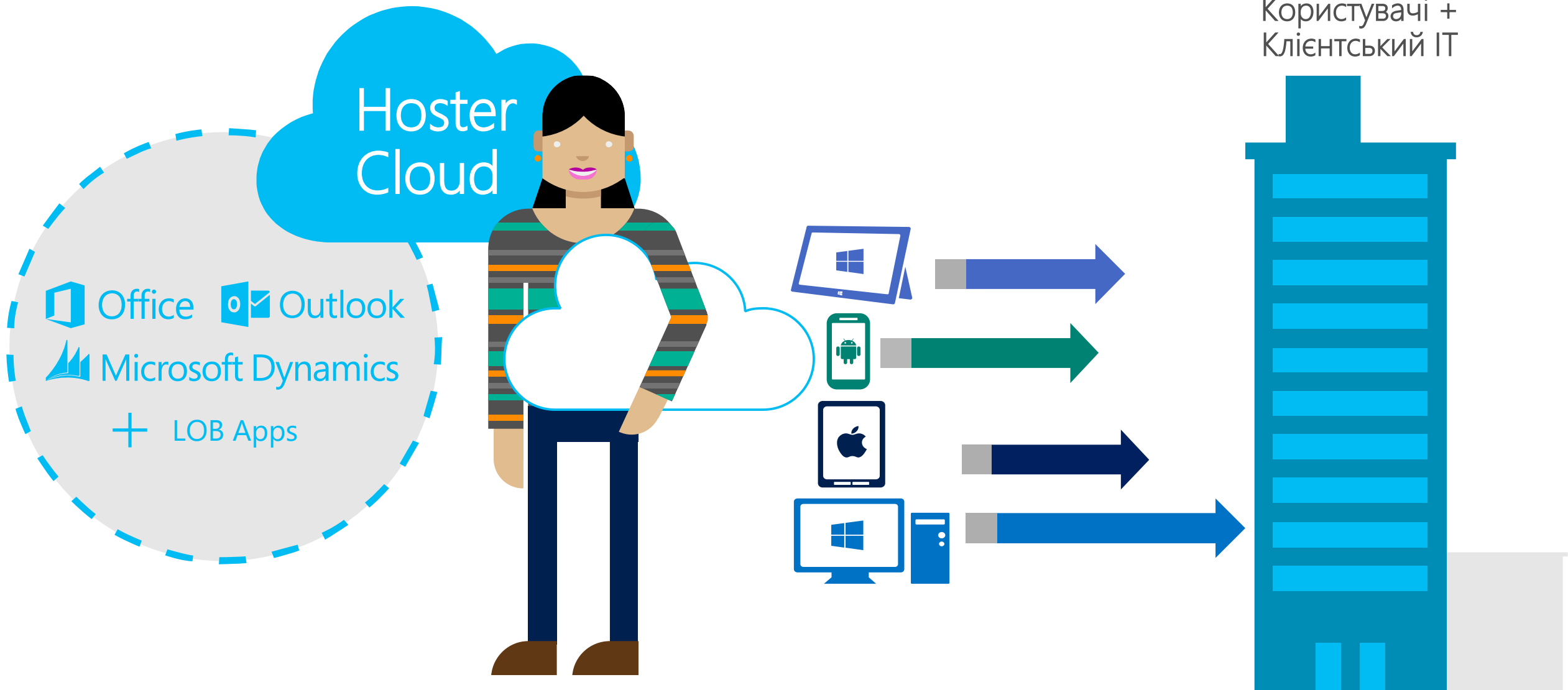
## Віддалений доступ

Робота на багатьох  
пристроях



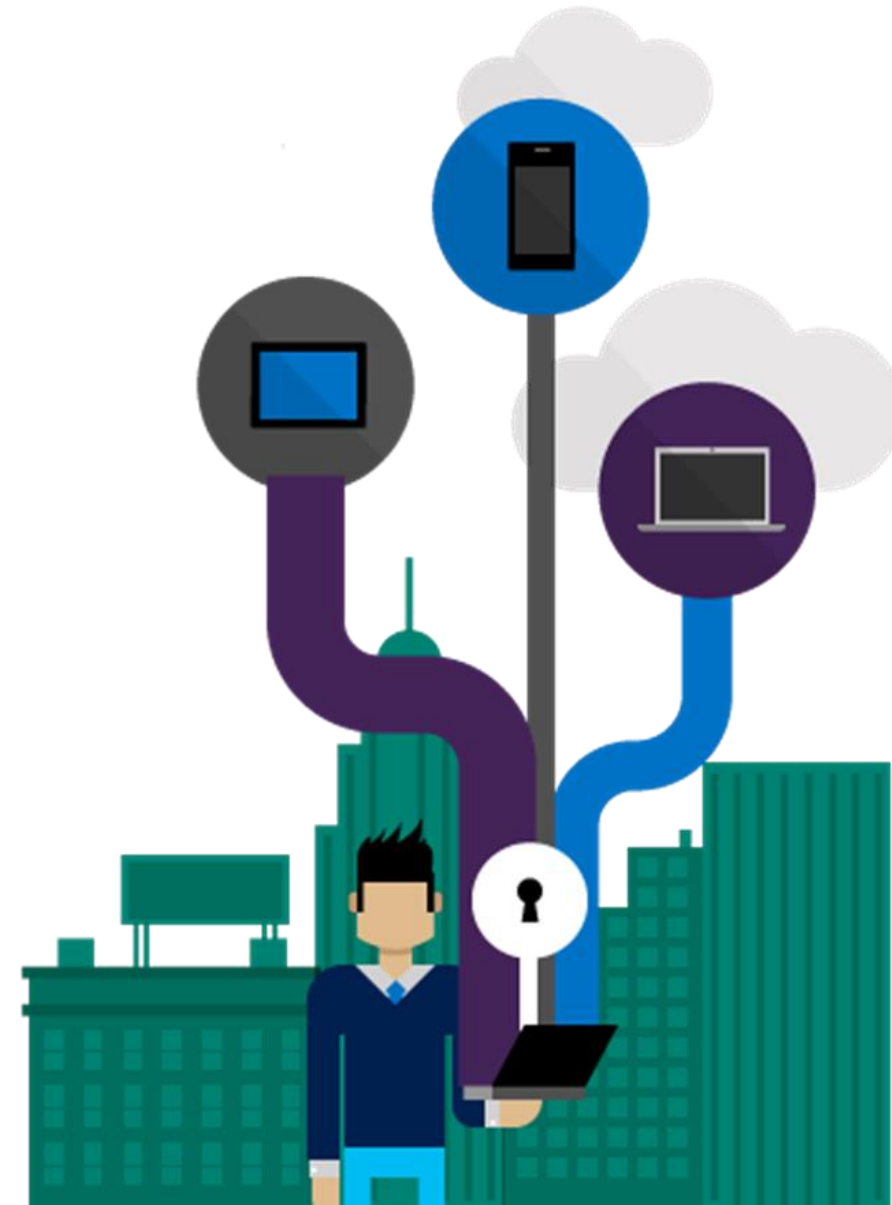
# Рішення Hosted Desktop

із CSR та Microsoft



# Розширення можливостей хостингу

Розробка пропозицій hosted desktop на технологіях віртуалізації Microsoft

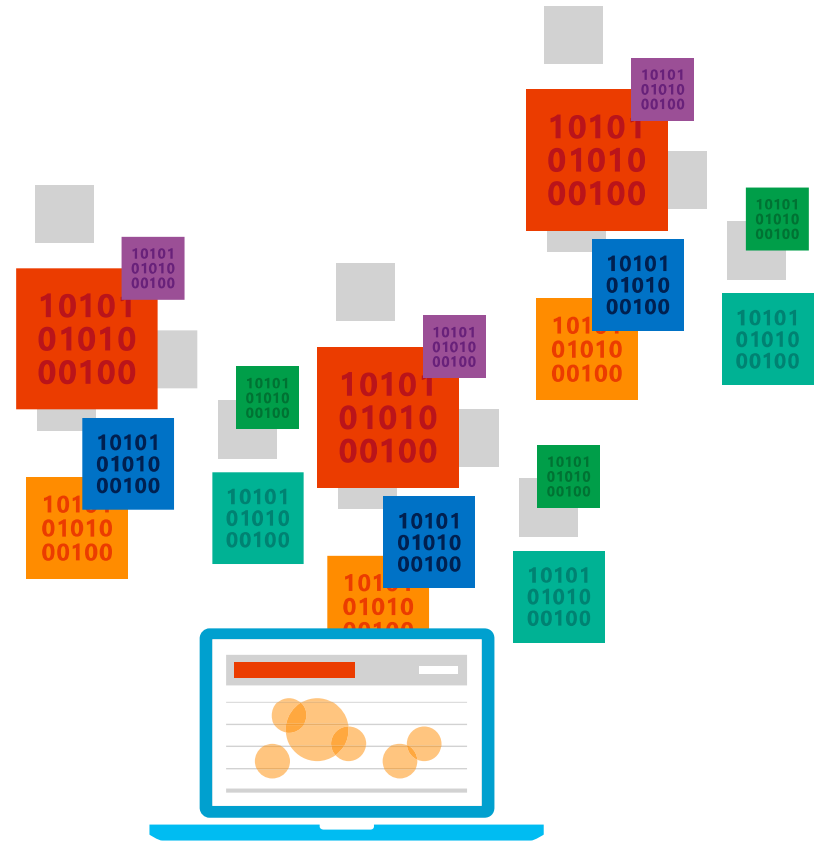


# Гнучкі можливості для масштабування



Дешева сесійна віртуалізація для забезпечення базових потреб багатьох користувачів (одна віртуальна машина, багато користувацьких під'єднань)

або



Багатофункціональна технологія віртуалізації та оркестрації машин для максимальної можливості керування та персоналізації

Plan	Plan P1 (Light user)	Plan P2 (Medium user)	Plan P3 (heavy user)	Plan S1 (Light user)	Plan S2 (Medium user)	Plan S3 (heavy user)	Plan A1 (per User-App)
Price	40 \$USD user-mo	60 \$USD user-mo	80 \$USD user-mo	60 \$USD user-mo	80 \$USD user-mo	100 \$USD user-mo	120 \$USD app-mo
Ideal for	People with ofimatic basic needs (i.e assistants)	People with more advanced needs and performance requirements (i.e technicians)	People with most advanced needs as high performance and high customization (i.e. designers; managers)	People with basic needs (i.e assistants)	People with more advanced needs and performance requirements (i.e technicians)	People with most advanced needs as high performance and high customization (i.e. designers; managers)	<b>Delivery of Apps</b> to final users (virtualized desktop based apps managed centrally)
Desktop Type	Session-based Desktops (shared VM)	Session-based Desktops (shared VM)	Session-based <b>personal</b> Desktops (dedicated VM)	Session-based Desktops (shared VM)	Session-based Desktops (shared VM)	Session-based <b>personal</b> Desktops (dedicated VM)	Remote-App Applications
Reuse (users/vCPU)	8	4	1	8	4	1	16
Min RAM (MB per session)	270 (2GB equiv. experience)	450 (4GB equiv.)	630 (8GB equiv. experience)	270 (2GB equiv. experience)	450 (4GB equiv. experience)	630 (8GB equiv. experience)	N/A
Network Bandwidth (min. Per user)	250Kbps	512Kbps	1Mbps	250Kbps	512Kbps	1Mbps	250Kbps
GPU (Graphical Processor Unit) - more UX performance	Virtual-based	Virtual-based	Physical-based	Virtual-based	Virtual-based	Physical-based	Virtual-based
Availability	99.9%	99.9%	99.9%	99.9%	99.9%	99.9%	99.9%
Office Pro Plus (Outlook, Excel, Word, Powerpoint, Access, Onenote, Publisher)		✓	✓		✓	✓	N/A
Office 365 subscription Office Pro Plus + 50 GB Email, 1TB Onedrive Storage, Skype for Business and Sharepoint (E3 plan)			✓			✓	N/A
Line of Business Apps Ready (you can deploy up to # off LoB and these will be managed and delivered as SaaS)	0	3	6	0	3	6	1
Management Model	Self-Managed by the customer	Self-Managed by the customer	Self-Managed by the customer	Full-Managed by the Provider	Full-Managed by the Provider	Full-Managed by the Provider	Full-Managed by the Provider
• Identity management				✓	✓	✓	✓
• Application patching				✓	✓	✓	✓
• Security & Compliance enforcement				✓	✓	✓	✓
• Continuity management	Includes just <b>Backup as a Service</b>	Includes just <b>Backup as a Service</b>	Includes just <b>Backup as a Service</b>	Includes <b>Backup as a Service</b> and <b>Disaster recovery</b> as a Service	Includes <b>Backup as a Service</b> and <b>Disaster recovery</b> as a Service	Includes <b>Backup as a Service</b> and <b>Disaster recovery</b> as a Service	Includes <b>Backup as a Service</b> and <b>Disaster recovery</b> as a Service